

**ROLLING  
IN GREASES**

# CONTINUOUS DEVELOPMENT

We save costs and improve quality thanks to the full technological cycle: from development to packaging of the finished product.

## SUPPLY STABILITY

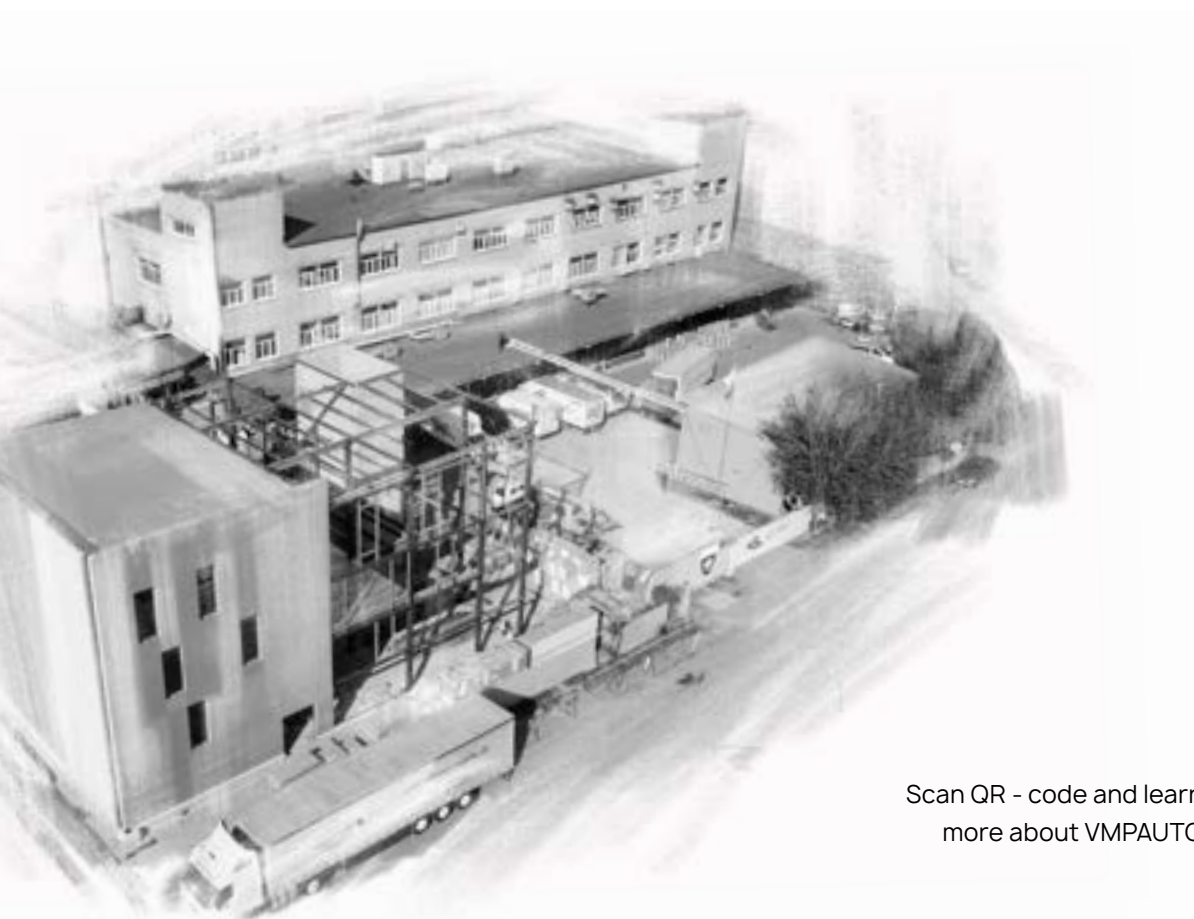
Full technological cycle: development, production, packing

## 4000 GREASE FORMULATIONS

We supply most industries. From household to tunneling.

## WHITE LABEL PRODUCTION

Create your own brand with us: choose the product and packaging.



Scan QR - code and learn more about VMPAUTO

## DREAM OR REALITY

The international raw material crisis of 2022. One after another, companies began to stop due to a shortage of raw materials and a sharp rise in prices. It reminded me of the fairy tale «Three Little Pigs», such strange children's associations in such an unchildish environment.

Here's a parallel for you: if your business is on a shaky foundation, don't expect it to stand when the «grey wolf» comes in the form of limitations and crises.

Constant and continuous development is needed. Only by developing technologies, investing money and soul in people, investing in modernization, we can defeat the «gray wolf». We have been building our stone house for 26 years, and now, when houses made of hay and brushwood are crumbling, our house stands like a fortress.



Vasily Kuzmin  
Director «VMPAUTO» LLC







It all starts with development. We can create products with unique properties for specific tasks



We constantly modernize the development and production processes so you can admire the quality of products.



Dosing in a unique package from 2 g or in classic 200 ml tubes.



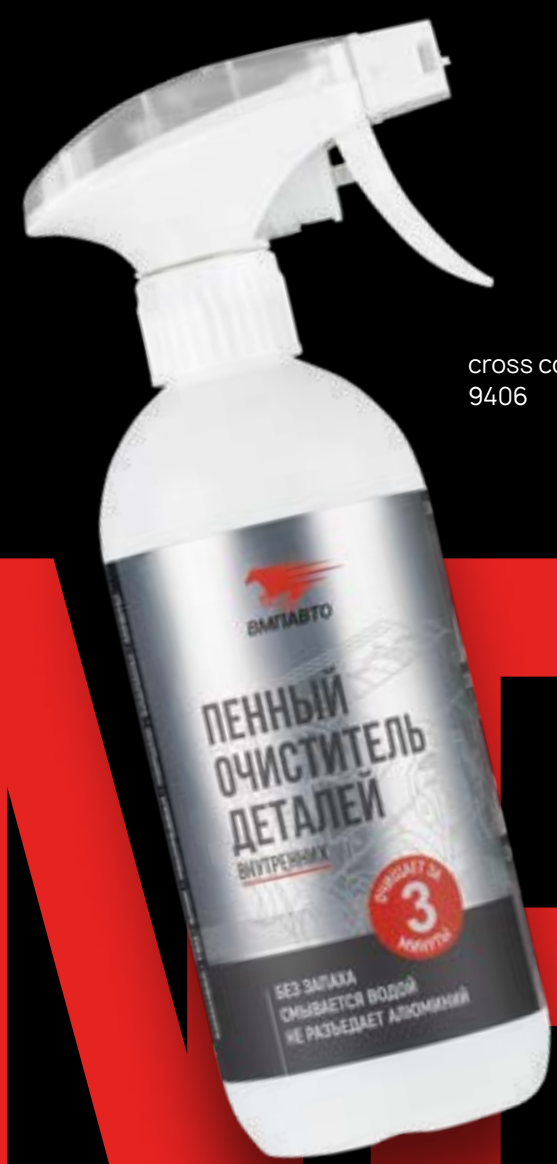




cross code:  
1916



cross code:  
8524



cross code:  
9406

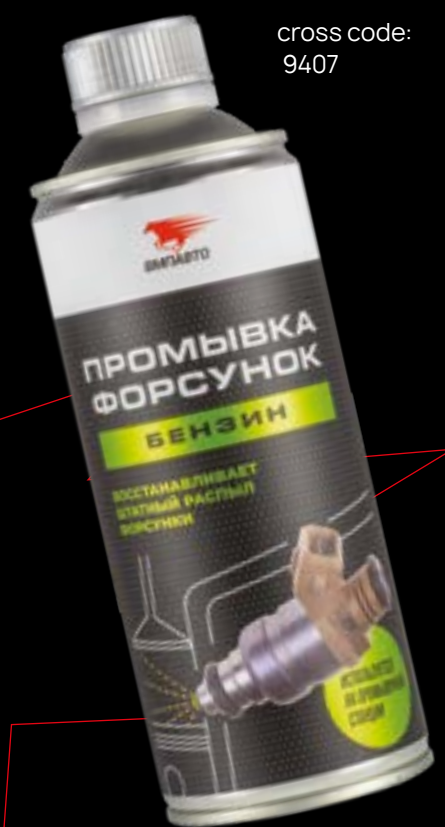


ЛУЧШЕ ПРОНИКАЕТ, ЛУЧШЕ СМАЗЫВАЕТ  
СОСТАВ  
2.0

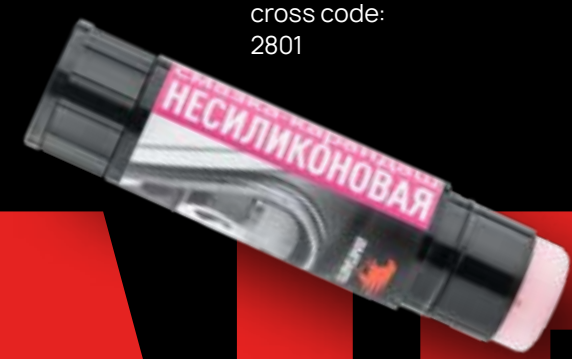
cross code:  
8609



cross code:  
8041



cross code:  
9407



cross code:  
2801



cross code:  
8504



cross code:  
1426



cross code:  
8512



## Aluminium pocket grease

For aluminum parts, contains fine aluminum.  
Reduces damage to threaded connections during tightening, does not cause electrochemical corrosion in the absence of other metals

Cross code: 8041



## High-Temperature pocket grease

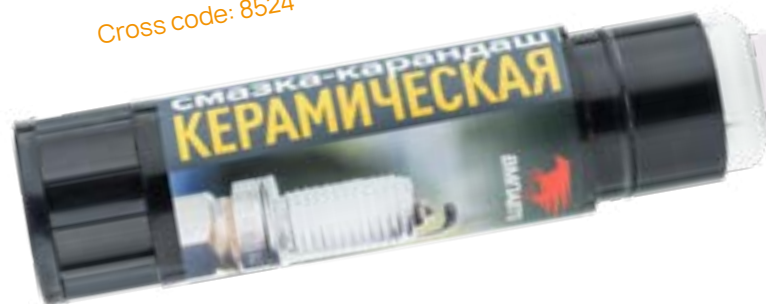
Facilitates subsequent disassembly of units and connections exposed to high temperatures. Protects threads, slip fits. Suitable for gaskets and exhaust manifold studs.

Cross code: 1916

## Ceramic pocket grease

Insulating ceramic grease in a convenient stick form to prevent "jamming" of mating surfaces, souring of threaded connections.

Cross code: 8524



## For door sealers

Replaces silicone formulations for their intended purpose. Contains vegetable oils. Protects rubber seals (car doors, window seals, seals and gaskets) from freezing. With the smell of bubblegum chewing gum.

Cross code: 2801

## Graphite pocket grease

Designed for application on sliding guides (door stops, hatch guides, etc.); threaded and slotted connections; friction pairs subjected to increased loads

Cross code: 8504



**NEW**  
**POCKET GREASES**



# MAKING YOUR BRAND IS EASY

We provide a full range of services within the framework of private label manufacturing: from formula development and preparation of technical documentation for product registration to filling and packaging of finished products.



## LUBRICATING GREASES

4000 OWN RECIPES, ANALOGUES OF POPULAR BRANDS



## FUEL ADDITIVES

WE WILL HELP SELECT THE RIGHT PRODUCT SO YOU CAN PROVIDE YOUR CLIENTS WITH A FULL SERVICE CYCLE: FROM QUALITY REPAIR TO PROFESSIONAL AUTOMOTIVE CHEMICALS.



## SERVICE PRODUCTS

INCREASE LOYALTY TO YOUR BRAND, SHOW CARE TO YOUR CUSTOMER. ORDER LUBRICANT IN SACHET FOR REPAIR KITS.





# DISSOLVE IN 3 MINUTES

Anti-sludge spray for engine parts softens, dissolves and washes away varnish and laquer deposits. Easily cleans the crankshaft, cylinder head, block, camshaft, pistons, valves, couplings, etc.

## ODORLESS

No more nausea from kerosene.

## CAN BE WASHED OFF WITH WATER

water soluble.

## HAS NO EFFECT ON ALUMINIUM OR OTHER METALS

Unlike alkaline engine cleaners.



Cross code:  
9406

ОЧИЩАЕТ ЗА  
3  
МИНУТЫ

БЕЗ ЗАПАХА  
СМЫВАЕТСЯ ВОДОЙ  
НЕ РАЗЪЕДАЕТ АЛЮМИНИЙ

BEFORE

AFTER

2023

13

1



The composition is intended for cleaning the removed parts of gasoline and diesel engines.

2



The sprayed composition interacts with deposits in the first seconds, penetrating and dissolving them.

3



Residues of the composition from oil contamination are removed with rags and can be washed off with water.

4



Anti-sludge spray, unlike household fat removers, does not cause corrosion.

In case of heavy contamination, repeat the procedure. Parts can be soaked in the solution for 1 - 2 hours.



500 ml — cross code: 9407

1 L — cross code: 9410



# YOUR COMPETITIVE ADVANTAGE

We have reduced the cost of the service so that you can stand out from other services.

Now the bottle volume of fuel injector cleaner is 500 ml instead of 1 liter. The former high cleaning efficiency without overpayments is for a larger volume of the product.

Now the cost of the service is lower, which means more customers will pay attention to your service center.

**ANALOG  
WYNN'S W76695  
INJECTION SYSTEM  
PURGE**



USING THE FUEL INJECTOR CLEANER WITH  
FUEL INJECTOR CLEANING KITS

## IT IS USED WITH ALL TYPES OF FUEL INJECTOR CLEANING KITS

- ✓ CLEANS FUEL INJECTORS, VALVES, RODS, COMBUSTION CHAMBER FROM ENGINE DEPOSITS.
- ✓ RESTORES THE FUEL INJECTION PRESSURE
- ✓ REDUCES THE TIME OF A FUEL INJECTOR DUTY CYCLE
- ✓ IMPROVES COMPRESSION IN CYLINDERS.
- ✓ PREVENTS STUCK VALVES

### CIRCULATION RATE

**500 ML = 1 ENGINE**

1 bottle

with an average volume of a  
4-cylinder engine

Do not add to the gas tank!

The composition works as undiluted form





# WORKS IN SEVERE WINTER AND HOT SUMMER

Only synthetic lubricant can ensure long-term operation of the assembly under extreme conditions of temperature fluctuations.

## DESIGNED SPECIFICALLY FOR NEEDLE BEARINGS:

Does not contain solid additives (particles of graphite, disulfide molybdenum, etc.), which can jamm the operation and even cause wear of the needle bearings. Optimal viscosity ensures high penetration into small gaps.



# LONG LIFE FOR ENTIRE LIFETIME OF THE CAR PART

## PROPERTIES:

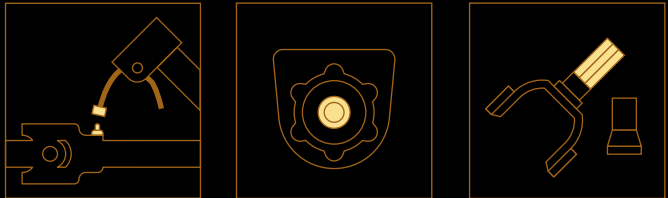
- SYNTHETIC BASE (PAO)
- WATER RESISTANT
- WITHOUT SOLID PARTICLES
- PROTECTS FROM CORROSION

## OPERATION TEMPERATURE:

FROM -50°C TO +180°C

## APPLICATION:

- DRIVE SHAFT CROSSBOW
- SUSPENSION SHAFT BEARING
- SPLINE SHAFT





# PENETRATION GREASE V2.0 LUBRICATES BETTER WITHOUT ODOR

We upgraded the penetration grease VALERA by releasing version 2.0: now it has powerful penetrating and lubricating properties like no other on the market

## FORGET ABOUT SQUEAK FOR A YEAR

Running rings around the majority of market competitors, solution lubricates 100 times better (scan the QR code and see the comparison test). It's like lubricating the hinges and forgetting about noise for a year.

Excellent solution for car service and home workshops. Releases threaded connections and restores mobility. Useful as a multifunctional tool - from unjamming stuck mechanisms to eliminating blocks in door locks

Keep it in  
the glovebox  
140 ml



Cross code: 8612



Cross code: 8609

# DEEP PENETRATION

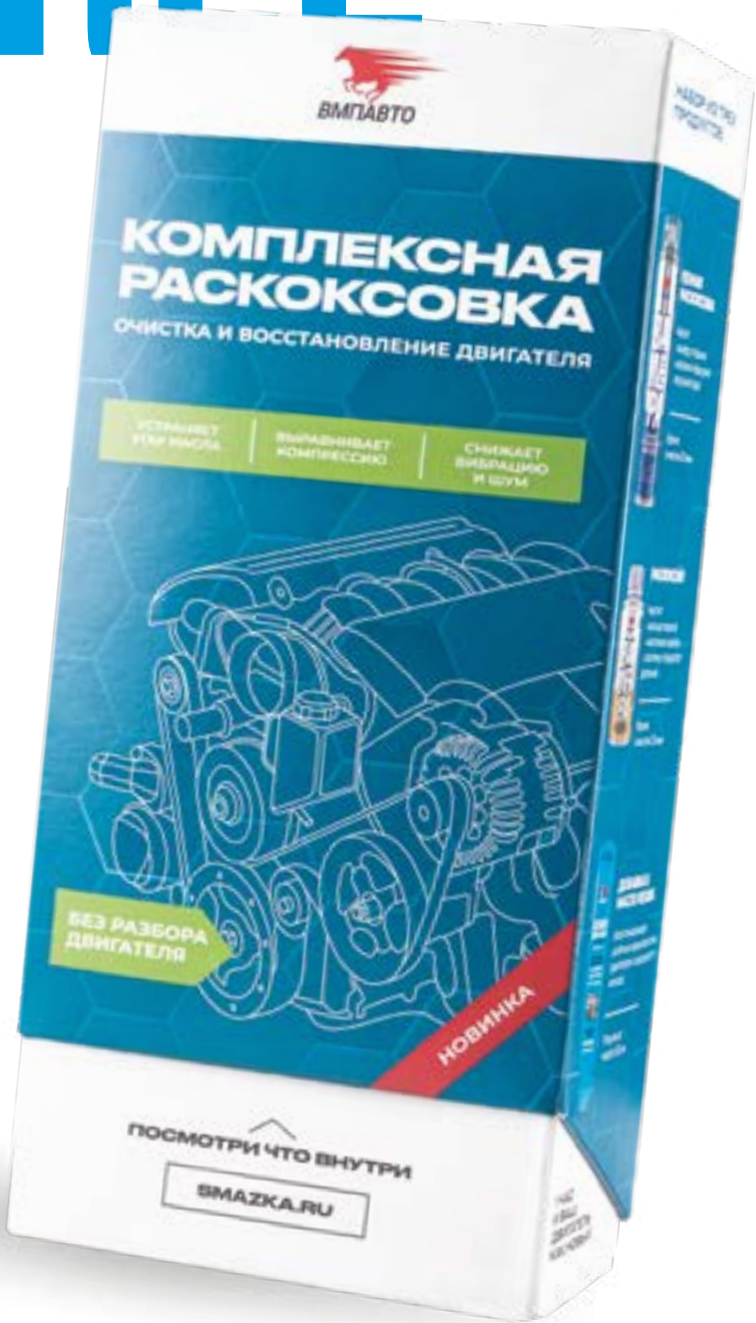




# THE POWER OF THREE

There is no magic pill. Each symptom has its own cause. The same is with decarbonization of the engine. One miracle remedy will not replace the complex approach.

- 1. CLEAN THE COMBUSTION CHAMBER:  
BRING THE COMPRESSION INTO NORMAL
- 2. GET RID OF DEPOSITS IN OIL SYSTEM:  
ELIMINATE OIL SHORTAGE
- 3. APPLY THE RESURS:  
INCREASE ENGINE RELIABILITY



Cross code: 8512



Anti-sludge foam

Cleans combustion chamber and restores compression



Anti-sludge engine flush

100 times more effective than traditional flush, removes varnish and eliminates oil shortage.

Restoring additive

Reduces engine wear and increases engine reliability

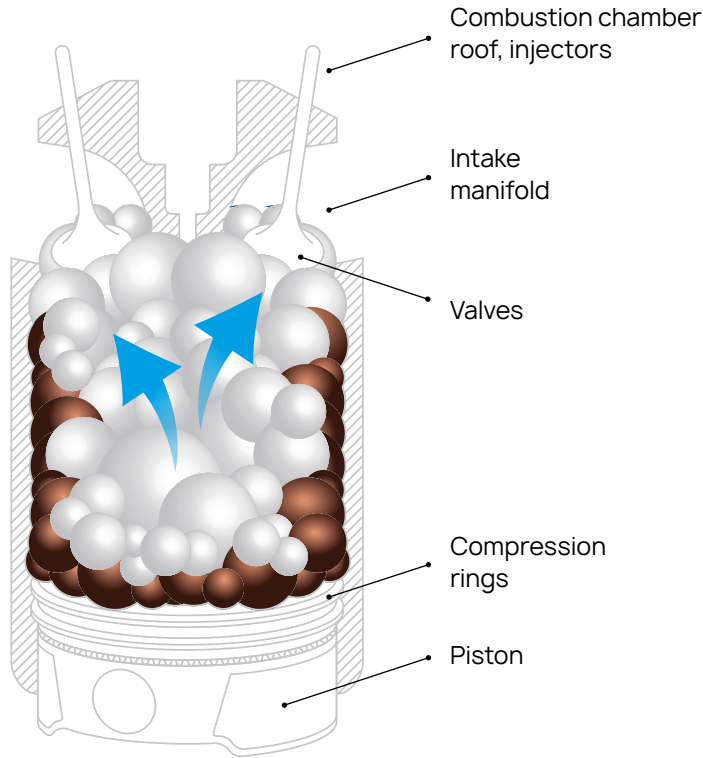


Cross code:  
8505



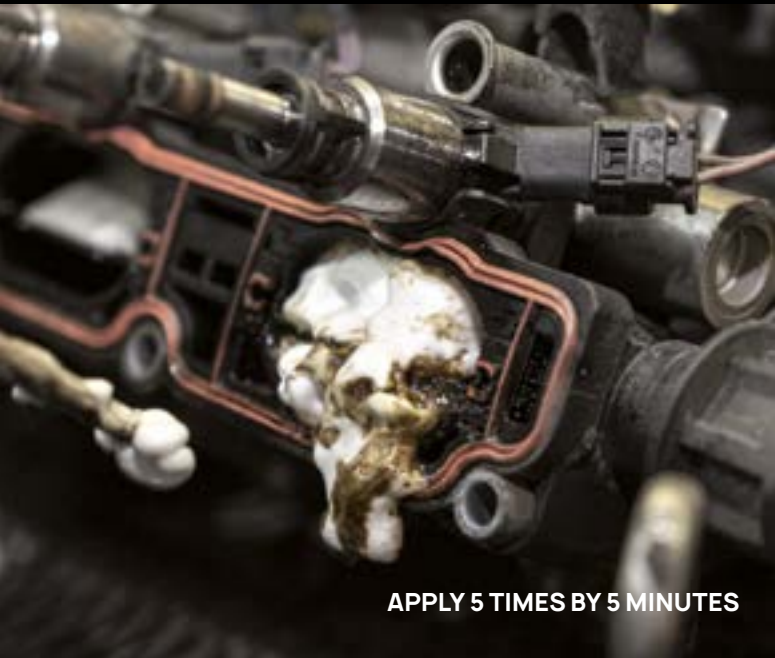
# STAGE 1 DISSOLVING THE VARNISH

Decarbonization of the combustion chamber roof, piston crown, compression rings, valves and intake manifold.



### WHAT IS AN ANTI-SLUDGE FOAM?

The composition is intended for cleaning the removed parts of gasoline and diesel internal combustion engines from carbon deposits: varnish, soot, sludge. Can be used to clean the EGR valve, turbocharger and other parts made of aluminium, steel, cast iron.



# RESTORES CYLINDER COMPRESSION

AND ALSO INCREASES POWER AND RETURNS  
ENGINE STABILITY

### INSTRUCTION

1. Cleaning should be carried out on a warm, but not hot engine. Set the pistons to the middle position. Remove the spark plugs, fill the combustion chamber or intake tract with cleaning foam.
2. Wait for the foam to subside (approximately 5 minutes), then repeat the operation. The optimal number of repetitions is 5 times.
3. Pump out contaminants using a syringe and tube from a foam canister.
4. Blow out the combustion chamber with compressed air. Screw in the spark plugs, start the engine.

### DOSAGE PER ENGINE VOLUMES

210 ml	-----	1,5 L
400 ml	-----	2,5 L
650 ml	-----	3,5 L

## T 50°C

Optimal engine temperature for  
effective application.  
Full instruction on the website:  
[www.vmpauto.com](http://www.vmpauto.com)





Cross code:  
9601



# STAGE 2 GETTING RID OF OIL BURN

Unlike conventional flushes, Decarboil RESURS dissolves deposits, unblocking oil scraper rings and eliminating oil consumption.

## 100X MORE EFFICIENT THAN CONVENTIONAL FLUSHES

The simple flushes (soft and express) have almost a zero efficiency of dissolving off oil deposits and lacquer. They are only capable of removing the sludge that are already flowing in used oil.

We can prove that!

We have conducted conclusive tests demonstrating the futility of conventional flushes against oil burn (scan the QR code)



# 100X MORE EFFICIENT THAN CONVENTIONAL FLUSHES



ЗАЛИТЬ РАСКОКСОЙЛ В МАСЛЯНУЮ СИСТЕМУ



ПОГОНЯТЬ 25 МИНУТ



СЛИТЬ МАСЛО

# CLEANS LUBRICATION SYSTEM

RESTORES THE THERMAL BALANCE OF THE ENGINE AND RETURNS THE NORMAL OPERATION CONDITIONS OF THE DISTRIBUTION SYSTEM

## STANDARD ICE CLEANING: ADD DECARBOIL TO OLD OIL

Apply at product temperature above +10°C.

1. Check the oil level and choose the correct dosage of the composition. A bottle of 100 ml is designed for 4-5 liters of oil. With a different amount of oil, the dosage is not more than 25 ml per 1 liter of oil.
2. Warm up the engine to operating temperature, turn it off, open the oil filler.
3. Pour the recommended dosage into old oil or new oil, flushing oil.
4. For effective cleaning of highly contaminated engines, it is necessary to keep the engine work in the range of 1700-2300 rpm for 20-25 minutes.
5. Switch off the engine and allow it to cool, for safely drain of used oil.
6. After application in engines with a painted oil pan, it is necessary to verify the integrity of the paintwork, if necessary, remove the paint.
7. Replace filter and oil.

## DEEP CLEANING: ADDING DECARBOIL IN FLUSHING OIL

This technology allows you to achieve the condition of the engine, as from the factory. Using flushing oil with the addition of innovative anti-sludge flush RESURS in the amount of 3%, after 2-3 flushes you will achieve a result unattainable before.

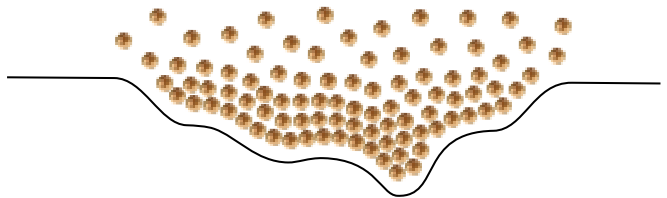


Cross code:  
4305



# STAGE 3 ENGINE SURFACE RECOVERY

Resurs nanoparticles made of an alloy of copper, silver and tin fill wear of engine parts revealed after decarbonization



### AFFORDABLE PRICE

The RESURS concentrate is more affordable than analogues due to the packaging, and it is also easy to use - mix with a small portion of oil, stir and the additive is ready. It saves money with every use. All other properties are similar to the usual RESURS

RESURS® technology  
protected by  
US patents 7, 375, 060 B2;  
EN 2247768



## ADD RESURS WITH EVERY OIL CHANGE

PROLONGS ENGINE LIFE UP TO 50% WITH  
REGULAR USE. FIRST EFFECT ALREADY  
AFTER 150 KM OF DRIVING

### WHEN RESURS WILL HELP

Oil top up volume 1000 km	Instruction
≤250 ml 	Use the RESURS for prevention
250-500 ml 	Use the RESURS with each oil change
≥500 ml 	Contact the car service

### DOSAGE

1 sachet is equal to  
1 bottle of RESURS  
TOTAL ENGINE



OIL VOLUME	Protection	Recovery
3-5 L	1 pcs.	2 pcs.
6-10 L	2 pcs.	4 pcs.
10-13 L	3 pcs.	6 pcs.

With a car mileage of more than  
100,000 km, double the dosage.



**POLYTECH**  
RESURS technology tested and  
approved by St. Petersburg  
Polytechnic University



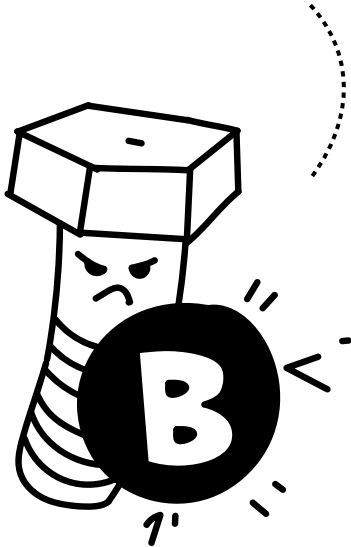


# VALERA FEATURES THAT ARE NOT KNOWN



Cross code:  
8601

Converts the  
corrosion into  
protective layer



After Valera the rust will be stopped.  
The rust is converted into  
a protective layer thanks to special  
additives, which protects the joint or  
assembly for a long time



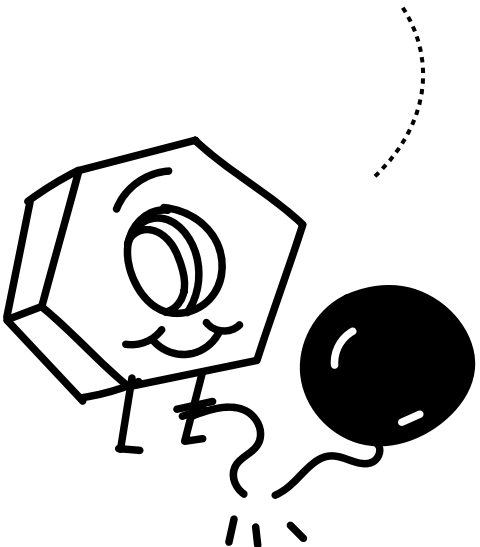
Long term and  
high-effective  
lubrication



Get rid of joint squeaking and jamming  
for a year. Valera has strong lubricating  
properties compared to conventional  
liquid keys.



Deep  
penetration and  
fast unjamming



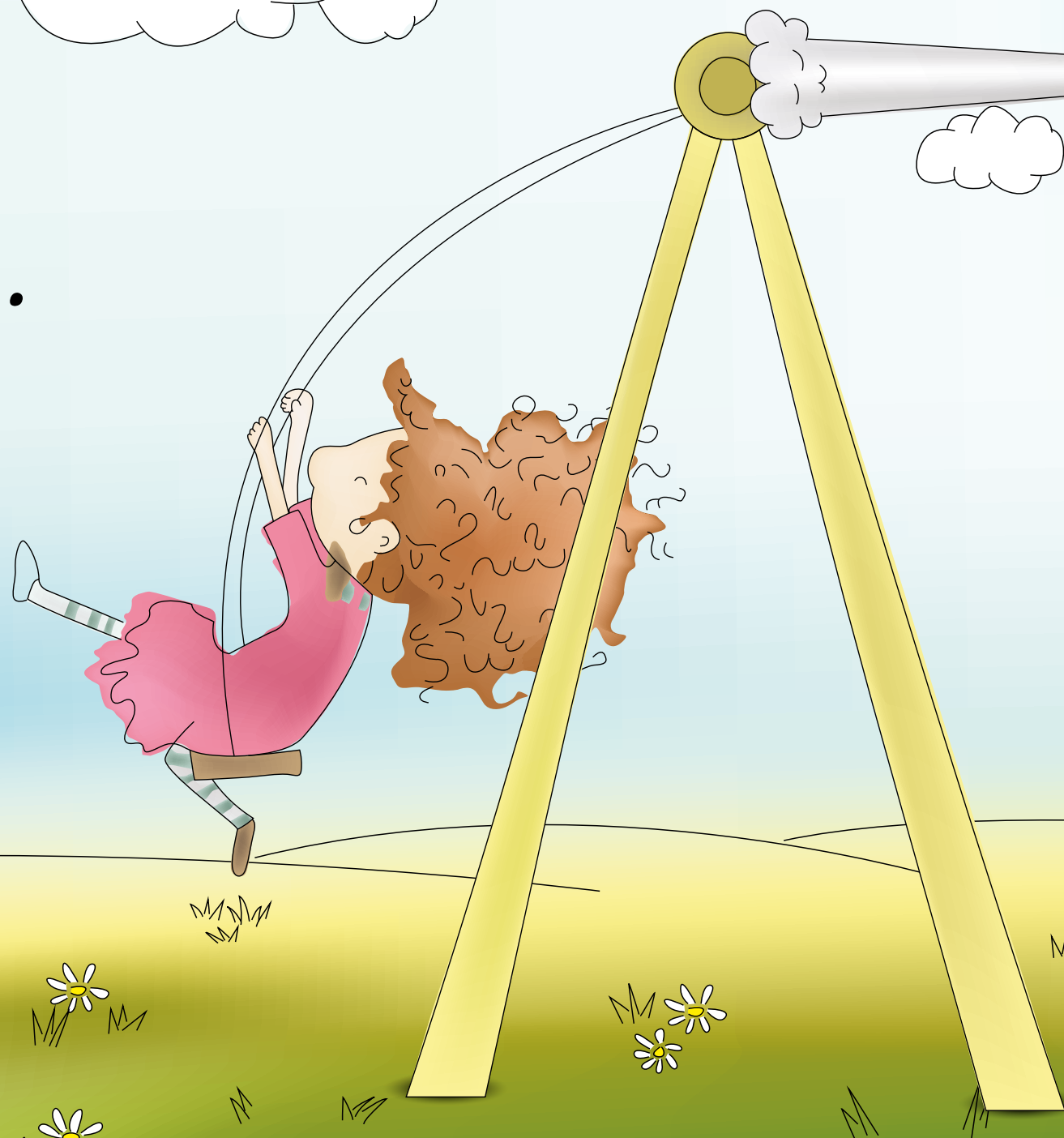
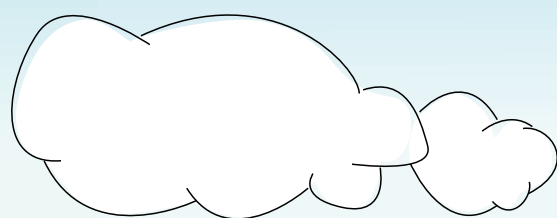
Valera will penetrate deep into  
the connection and, importantly,  
reduce friction on the thread when  
unscrewing. It will go like clockwork







- Oh...  
So Squeaky...  
- Must use  
Valeza!!





# SIMPLE ASSEMBLY AND SURE PROTECTION IN FIRST MINUTES AFTER LAUNCH

It is fully dissolved in oil after  
the engine launch without  
affecting the lubricating  
properties



Cross code:  
1422

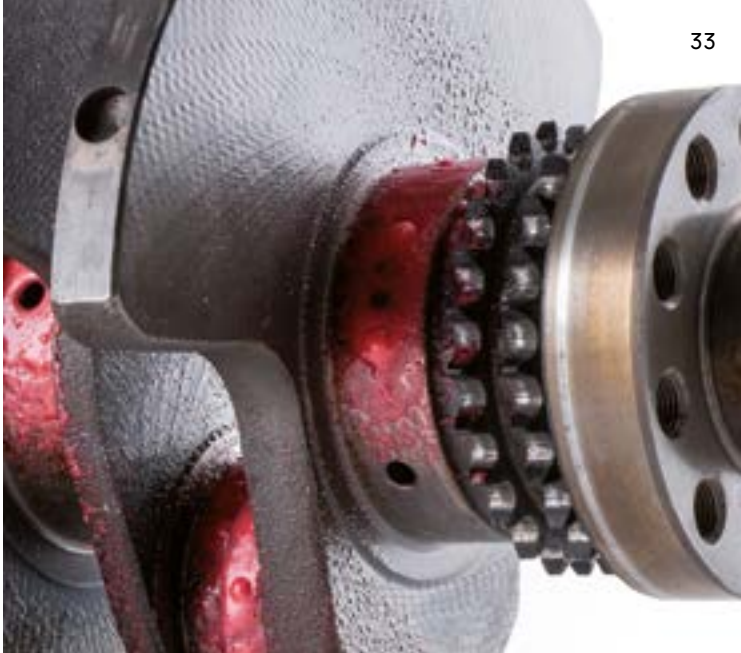
Cross code:  
1424

Cross code:  
1426

## SPRAY FOR ENGINE

FAST APPLICATION  
AND VISUAL CONTROL

Analogs:  
Liqui Moly LM 48 Spruhpaste



## PASTE FOR ENGINE

MAXIMUM ADHESIVENESS OF ASSEMBLED  
ENGINE PARTS DURING OVERHAUL

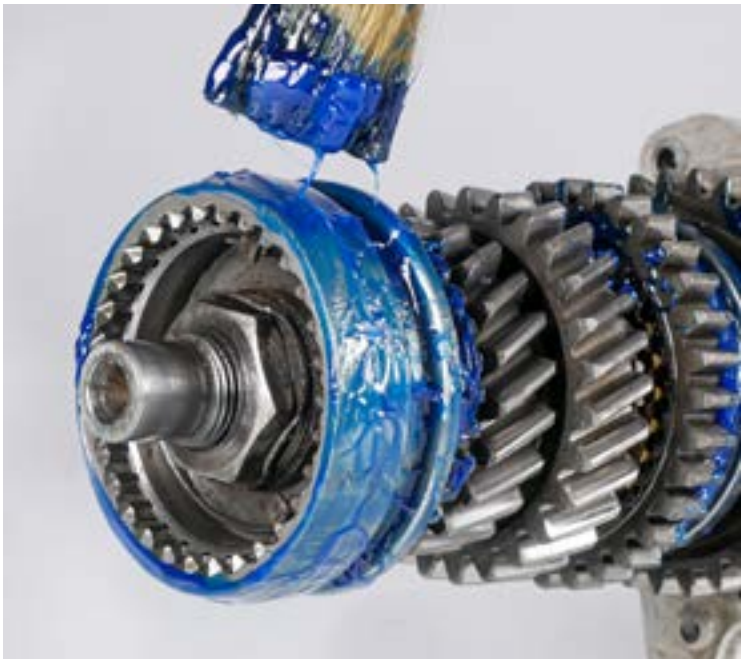
Analogs:  
Liqui Moly LM 48 Montagepaste,  
Lubriplate L0034-094 No. 105  
Motor Assembly Grease



## PASTE FOR GEARBOXES

USED FOR TRANSMISSION ASSEMBLY  
INCLUDING MT, AT AND TRANSFER  
BOXES

Analogs:  
TransJel Gold (SBX-Filtran),  
Lubegard Assemlée goo





# WHY DO EXPERTS CHOOSE PAG

There are no strict requirements for layer thickness or pre-cleaning.

Wear forgives the shortcomings of parts. Due to the viscous composition, it fills the bumps, makes the unit work smoothly so you can feel the car better. Braking distance becomes shorter.

- If the guide pins are worn and there are small backlashes.
- If there is a risk of old grease or external particles.
- When a caliper manufacturer recommends a PAG-based lubricant.

Alexander Davidoff  
CEO «Volk Brake Performance Service»

ORDER  
UNDER  
PRIATE  
LABEL



MULTIPURPOSE



**REMOVES:** TRW PFG 110, Toyota Rubber Grease, Niglube RM, Molykote G-3407, Liqui Moly, Kluber Syntheso GLEP1





# OIL ADDITIVES RANGE

PROTECTION AND ENGINE  
RECOVERY WITH EVERY  
OIL CHANGE



4301

4305

4304



# FUEL ADDITIVES RANGE

JUST ADD  
IN THE FUEL TANK



9411

9403

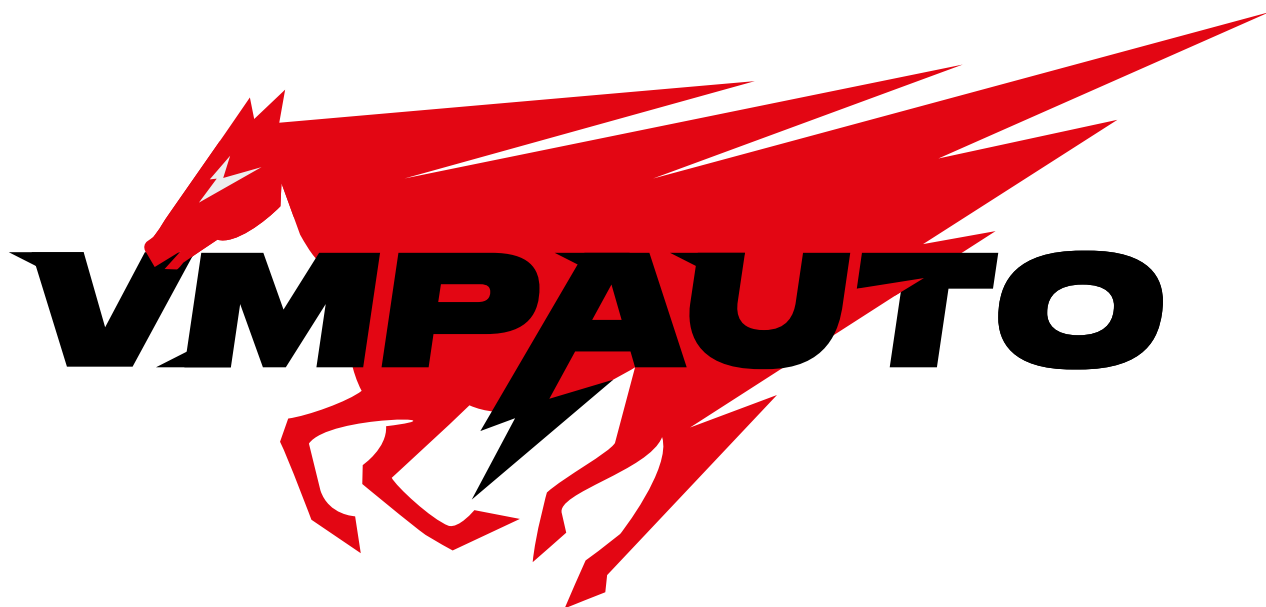
9510

9515

9503

9303





© LLC «VMPAUTO»  
198095, Russia, St. Petersburg,  
Promyshlennaya str. 40.  
+7(812) 601-05-53.  
[export@vmpauto.com](mailto:export@vmpauto.com)